

Web Appendix

to the paper

Determinants of Economic Growth: Will Data Tell?

by Antonio Ciccone and Marek Jarocinski

October 2007

downloadable from: www.antonioiciccone.eu

Appendix A: Data and Samples

Table A1a. Sala-i-Martin, Doppelhofer, and Miller (2004) dataset

Variable	Description and Source	Mean	Standard Deviation
Primary Schooling in 1960	Enrollment rate in primary education in 1960. Barro and Jong-Wha Lee (1993).	0.726	0.292
Fertility in 1960s	Fertility in 1960's. Barro and Sala-i-Martin (1995).	1.562	0.417
African Dummy	Dummy for Sub-Saharan African countries.	0.307	0.461
Fraction Confucius	Fraction of population Confucian. Barro (1999).	0.016	0.079
Fraction Muslim	Fraction of population Muslim in 1960. Barro (1999).	0.149	0.294
Latin American Dummy	Dummy for Latin American countries.	0.227	0.419
East Asian Dummy	Dummy for East Asian countries.	0.114	0.317
Fraction Buddhist	Fraction of population Buddhist in 1960. Barro (1999).	0.047	0.167
Primary Exports 1970	Fraction of primary exports in total exports in 1970. From Sachs and Warner (1997).	0.720	0.281
Nominal Government GDP Share 1960s	Average share of nominal government spending to nominal GDP between 1960 and 1964. Calculated from Heston et al. (2001).	0.149	0.058
Openness Measure 1965-74	Ratio of exports plus imports to GDP, averaged over 1965 to 1974. This variable was provided by Robert Barro.	0.523	0.334
Timing of Independence	Timing of national independence measure: 0 if before 1914; 1 if between 1914 and 1945; 2 if between 1946 and 1989; and 3 if after 1989. From Gallup et al. (2001).	1.011	0.971
Population Density Coastal in 1960s	Coastal (within 100 km of coastline) population per coastal area in 1965. From Gallup et al. (2001).	146.870	506.920
Hydrocarbon Deposits in 1993	Log of hydrocarbon deposits in 1993. From Gallup et al. (2001).	0.421	4.326
Years Open 1950-94	Number of years economy was open between 1950 and 1994. From Jeffrey D. Sachs and Andrew M. Warner (1995).	0.355	0.342
Fraction Protestants	Fraction of population Protestant in 1960. Barro (1999).	0.135	0.283
Spanish Colony	Dummy variable for former Spanish colonies. Barro (1999).	0.170	0.376
Fraction Speaking Foreign Language	Fraction of population speaking foreign language. Hall and Jones (1999).	0.321	0.411
Fraction Catholic	Fraction of population Catholic in 1960. Barro (1999).	0.328	0.412
European Dummy	Dummy for European economies.	0.216	0.411
Average Inflation 1960-90	Average inflation rate between 1960 and 1990. Levine and Renelt (1992).	13.130	14.905
Fraction of Tropical Area	Proportion of country's land area within geographical tropics. From John L. Gallup et al. (2001).	0.570	0.469
Government Share of GDP in 1960s	Average share government spending to GDP between 1960-1964. From Heston et al. (2001).	0.166	0.071
Air Distance to Big Cities	Logarithm of minimal distance (in km) from New York, Rotterdam, or Tokyo. From Gallup et al. (2001).	4324.200	2598.900
Fraction Population Over 65	Fraction of population older than 65 years in 1960. Barro and Lee (1993)	0.049	0.029
Square of Inflation 1960-	Square of average inflation rate between 1960 and	394.540	1113.300

90	1990.		
Ethnolinguistic Fractionalization	Average of five different indices of ethnolinguistic fractionalization which is the probability of two random people in a country not speaking the same language. From William Easterly and Ross Levine (1997).	0.348	0.300
Defence Spending Share	Average share public expenditures on defence as fraction of GDP between 1960 and 1965. Barro and Lee (1993).	0.026	0.024
Fraction Population in Tropics	Proportion of country's population living in geographical tropics. From Gallup et al. (2001).	0.300	0.371
Tropical Climate Zone	Fraction tropical climate zone. From Gallup et al. (2001).	0.190	0.267
Size of Economy	Logarithm of aggregate GDP in 1960.	16.150	1.810
Fraction Population Less than 15	Fraction of population younger than 15 years in 1960. Barro and Lee (1993).	0.393	0.074
Landlocked Country Dummy	Dummy for landlocked countries.	0.170	0.376
Revolutions and Coups	Number of revolutions and military coups. Barro and Lee (1993).	0.185	0.231
Life Expectancy in 1960	Life expectancy in 1960. Barro and Lee (1993).	53.716	11.993
Higher Education 1960	Enrollment rates in higher education. Barro and Lee (1993).	0.038	0.050
Absolute Latitude	Absolute latitude. Barro (1999).	23.211	16.747
Population Growth Rate 1960-90	Average growth rate of population between 1960 and 1990. Barro and Lee (1993).	0.022	0.009
Fraction Hindus	Fraction of the population Hindu in 1960. Barro (1999).	0.028	0.124
Gov. Consumption Share 1960s	Share of expenditures on government consumption to GDP in 1961. Barro and Lee (1993).	0.116	0.074
Interior Density	Interior (more than 100 km from coastline) population per interior area in 1965. From Gallup et al. (2001).	43.371	87.561
War Participation 1960-90	Indicator for countries that participated in external war between 1960 and 1990. Barro and Lee (1993).	0.398	0.489
Socialist Dummy	Dummy for countries under Socialist rule for considerable time during 1950 to 1995. From Gallup et al. (2001).	0.068	0.252
Fraction Orthodox	Fraction of population Orthodox in 1960. Barro (1999).	0.019	0.098
Malaria Prevalence in 1960s	Index of malaria prevalence in 1966. From Gallup et al. (2001).	0.339	0.428
Political Rights	Political rights index. From Barro (1999).	3.823	1.985
Investment Price	Average investment price level between 1960 and 1964 on purchasing power parity basis. From Heston et al. (2001).	92.466	53.372
Oil Producing Country Dummy	Dummy for oil-producing country. Barro (1999).	0.057	0.231
Colony Dummy	Dummy for former colony. Barro (1999).	0.750	0.433
Capitalism	Capitalism index. From Hall and Jones (1999).	3.466	1.373
Real Exchange Rate Distortions	Real exchange rate distortions. Levine and Renelt (1992).	125.030	41.469
Public Investment Share	Average share of expenditures on public investment as fraction of GDP between 1960 and 1965. Barro and Lee (1993).	0.052	0.039
British Colony Dummy	Dummy for former British colony after 1776. Barro (1999).	0.318	0.466
Land Area	Area in km ² . Barro and Lee (1993).	867190	1804300

Population Density 1960	Population per area in 1960. Barro and Lee (1993).	108.070	200.300
Population in 1960	Population in 1960. Barro (1999).	20308	52239
Fraction GDP in Mining	Fraction of GDP in mining. From Robert E. Hall and Charles I. Jones (1999).	0.051	0.076
Public Education Spending Share in GDP in 1960s	Average share public expenditures on education as fraction of GDP between 1960 and 1965. Barro and Lee (1993).	0.024	0.010
Fraction of Land Area Near Navigable Water	Proportion of country's land area within 100 km of ocean or ocean-navigable river. From Gallup et al. (2001).	0.472	0.378
Religion Measure	Religion measure. Barro (1999).	0.780	0.192
Civil Liberties	Index of civil liberties index in 1972. Barro (1999).	0.509	0.324
English Speaking Population	Fraction of population speaking English. From Hall and Jones (1999).	0.084	0.251
Fraction Spent in War 1960-90	Fraction of time spent in war between 1960 and 1990. Barro and Lee (1993).	0.070	0.152
Terms of Trade Growth in 1960s	Growth of terms of trade in the 1960's. Barro and Lee (1993).	-0.002	0.034
Terms of Trade Ranking	Barro (1999).	0.281	0.189
Outward Orientation	Measure of outward orientation. Levine and Renelt (1992).	0.398	0.489

Notes: The information is the same as in Table 1 of Sala-i-Martin, Doppelhofer, and Miller (2004) (we include it for easier reference). Means and standard deviations are computed on the 88 country sample.

Table A1b. Income growth and level from alternative sources

Variable	Description	Source	Mean	Standard Deviation
Average growth rate of GDP per capita in 1960-1996	Growth of GDP per capita at purchasing power parities (chained) between 1960 and 1996	PWT 6.0	0.01821	0.01891
	As above	PWT 6.1	0.01917	0.01832
	As above	PWT 6.2	0.01989	0.01618
GDP in 1960 (log)	Logarithm of GDP per capita (chained) in 1960	PWT 6.0	7.35490	0.89595
	As above	PWT 6.1	7.74370	0.90433
	As above	PWT 6.2	7.84460	0.95021
Average growth rate of GDP per capita in 1975-1996	Growth of GDP per capita at purchasing power parities (chained) between 1975 and 1996	PWT 6.1	0.01267	0.02005
	As above	PWT 6.2	0.01287	0.01920
	Growth of GDP per capita (constant LCU), 1975-1996	WDI	0.01225	0.01993
GDP in 1975 (log)	Logarithm of GDP per capita (chained) in 1975	PWT 6.1	8.17560	0.98918
	As above	PWT 6.2	8.21390	1.02990
	GDP per capita in 1975, PPP (current international \$)	WDI	7.29840	1.01960

Notes: Means and standard deviations of PWT 6.2 and WDI data are computed on the maximum samples, see Table A2.

Table A1c. Variables from the Sala-i-Martin, Doppelhofer, and Miller (2004) dataset that were updated for the analysis of the 1975-1996 growth

Variable	Description and source	PWT 6.2, 87 countries		PWT 6.1, 86 countries	
		Mean	Standard deviation	Mean	Standard deviation
Primary schooling in 1975	Enrollment rate in primary education in 1975; from Barro and Jong-Wha Lee (2000)	0.8337	0.2397	0.8379	0.2378
Investment price	Average investment price level between 1970 and 1974 on purchasing power parity basis; from PWT 6.1/6.2	95.48	128.47	78.69	39.04
Life expectancy in 1975	Life expectancy in 1975; from Barro and Lee (1993)	58.844	11.140	59.015	11.090
Gov. consumption share 1970s	Share of expenditures on government consumption to GDP in 1970-74; from Barro and Lee (1993)	0.1598	0.0752	0.1579	0.0737
Population density 1975	Population per area in 1975; population from PWT 6.1; area from Barro and Lee (1993)	163.79	608.54	164.91	608.99
Government share of GDP in 1970s	Average share government spending to GDP between 1970-1974; from PWT 6.1/6.2	19.0080	9.0936	19.4250	11.7950
Higher education 1975	Enrollment rates in higher education in 1970-74; from Barro and Lee (2000)	0.1071	0.1094	0.1081	0.1096
Fraction population less than 15	Fraction of population younger than 15 years in 1975; from Barro and Lee (1993)	0.3836	0.0879	0.3829	0.0881
Nominal government GDP share 1970s	Average share of nominal government spending to nominal GDP between 1970 and 1974; calculated from PWT 6.1/6.2	17.5960	8.6734	17.9380	10.1700
Fraction population over 65	Fraction of population older than 65 years in 1975; from Barro and Lee (1993)	0.0550	0.0373	0.0553	0.0374
Defence spending share	Average share public expenditures on defence as fraction of GDP between 1970 and 1974; from Barro and Lee (1993)	0.0322	0.0462	0.0321	0.0465
Population in 1975	Population in 1975; from PWT 6.1/6.2	27443	72302	27286	71811
Public education spending share in GDP in 1970s	Average share public expenditures on education as fraction of GDP between 1970 and 1975; from Barro and Lee (1993)	0.0339	0.0139	0.0338	0.0139
Size of economy	Logarithm of aggregate GDP in 1975; from PWT 6.1/6.2	17.3110	1.8421	17.2590	1.8358

Notes: Variables taken from the PWT dataset were updated using either version 6.1 or version 6.2. Other variables were taken always from the same source (Barro and Lee, 1993 or 2000).

Table A2. Samples on which all 67 variables from the Sala-i-Martin, Doppelhofer, and Miller (2004) dataset and alternative income data were available

NUM	CODE	COUNTRY	1960- 1996 PWT 6.0	1960- 1996 PWT 6.1	1960- 1996 PWT 6.2	1975- 1996 PWT 6.2 /WDI	1975- 1996 PWT 6.1 /WDI
1	DZA	Algeria	1	1	1	1	1
2	AGO	Angola	0	0	0	0	0
3	BEN	Benin	1	1	1	1	1
4	BWA	Botswana	1	1	0	1	1
5	BFA	Burkina Faso	0	0	0	1	1
6	BDI	Burundi	1	1	1	1	1
7	CMR	Cameroon	1	1	1	1	1
8	CPV	Cape Verde	0	0	0	0	0
9	CAF	Cent'l Afr. Rep.	1	1	0	1	1
10	TCD	Chad	0	0	0	0	0
11	COM	Comoros	0	0	0	0	0
12	COG	Congo	1	1	1	1	1
13	EGY	Egypt	1	1	1	1	1
14	ETH	Ethiopia	1	1	1	0	0
15	GAB	Gabon	1	1	1	1	1
16	GMB	Gambia	1	1	1	1	1
17	GHA	Ghana	1	1	1	1	1
18	GIN	Guinea	0	0	0	0	0
19	GNB	Guinea-Bissau	0	0	0	0	0
20	CIV	Cote d'Ivoire	0	0	0	0	0
21	KEN	Kenya	1	1	1	1	1
22	LSO	Lesotho	1	1	1	1	1
23	LBR	Liberia	1	0	0	0	0
24	MDG	Madagascar	1	1	1	1	1
25	MWI	Malawi	1	1	1	1	1
26	MLI	Mali	0	0	0	1	1
27	MRT	Mauritania	1	1	0	1	1
28	MUS	Mauritius	0	0	0	0	0
29	MAR	Morocco	1	1	1	1	1
30	MOZ	Mozambique	0	0	0	0	0
31	NER	Niger	1	1	1	1	1
32	NGA	Nigeria	1	1	1	1	1
33	RWA	Rwanda	1	1	1	1	1
34	SEN	Senegal	1	1	1	1	1
35	SYC	Seychelles	0	0	0	0	0
36	SLE	Sierra Leone	0	0	0	1	1
37	SOM	Somalia	0	0	0	0	0
38	ZAF	South Africa	1	1	1	1	1
39	SDN	Sudan	0	0	0	1	0
40	SWZ	Swaziland	0	0	0	0	0
41	TZA	Tanzania	1	1	1	0	0
42	TGO	Togo	1	1	1	1	1
43	TUN	Tunisia	1	0	0	1	1
44	UGA	Uganda	1	1	1	0	0
45	ZAR	Zaire	1	1	0	1	1
46	ZMB	Zambia	1	1	1	1	1
47	ZWE	Zimbabwe	1	1	1	1	1
48	BHS	Bahamas, The	0	0	0	0	0

49	BRB	Barbados	0	0	0	0	0
50	CAN	Canada	1	1	1	1	1
51	CRI	Costa Rica	1	1	1	1	1
52	DMA	Dominica	0	0	0	0	0
53	DOM	Dominican Rep.	1	1	1	1	1
54	SLV	El Salvador	1	1	1	1	1
55	GRD	Grenada	0	0	0	0	0
56	GTM	Guatemala	1	1	1	1	1
57	HTI	Haiti	1	0	0	1	1
58	HND	Honduras	1	1	1	1	1
59	JAM	Jamaica	1	1	1	1	1
60	MEX	Mexico	1	1	1	1	1
61	NIC	Nicaragua	0	0	0	0	0
62	PAN	Panama	1	1	1	1	1
63	LCA	St.Lucia	0	0	0	0	0
64	VCT	St.Vincent & Grens.	0	0	0	0	0
65	TTO	Trinidad & Tobago	1	1	1	1	1
66	USA	United States	1	1	1	1	1
67	ARG	Argentina	1	1	1	1	1
68	BOL	Bolivia	1	1	1	1	1
69	BRA	Brazil	1	1	1	1	1
70	CHL	Chile	1	1	1	1	1
71	COL	Colombia	1	1	1	1	1
72	ECU	Ecuador	1	1	1	1	1
73	GUY	Guyana	0	0	0	0	0
74	PRY	Paraguay	1	1	1	1	1
75	PER	Peru	1	1	1	1	1
76	SUR	Suriname	0	0	0	0	0
77	URY	Uruguay	1	1	1	1	1
78	VEN	Venezuela	1	1	1	1	1
79	AFG	Afghanistan	0	0	0	0	0
80	BHR	Bahrain	0	0	0	0	0
81	BGD	Bangladesh	0	0	0	0	0
82	BUR	Myanmar (Burma)	0	0	0	0	0
83	CHN	China	0	0	0	0	0
84	HKG	Hong Kong	1	1	1	1	1
85	IND	India	1	1	1	1	1
86	IDN	Indonesia	1	1	1	1	1
87	IRN	Iran, I.R. of	0	0	0	0	0
88	IRQ	Iraq	0	0	0	0	0
89	ISR	Israel	1	1	1	1	1
90	JPN	Japan	1	1	1	1	1
91	JOR	Jordan	1	1	1	1	1
92	KOR	Korea	1	1	1	1	1
93	KWT	Kuwait	0	0	0	0	0
94	MYS	Malaysia	1	1	1	1	1
95	NPL	Nepal	1	1	1	1	1
96	OMN	Oman	0	0	0	0	0
97	PAK	Pakistan	1	1	1	1	1
98	PHL	Philippines	1	1	1	1	1
99	SAU	Saudi Arabia	0	0	0	0	0
100	SGP	Singapore	1	1	1	1	1
101	LKA	Sri Lanka	1	1	1	1	1
102	SYR	Syria	1	1	1	1	1

103	TWN	Taiwan	1	1	1	0	0
104	THA	Thailand	1	1	1	1	1
105	ARE	Unit'd Arab Emir.	0	0	0	0	0
106	YEM	Yemen, N.Arab	0	0	0	0	0
107	AUT	Austria	1	1	1	1	1
108	BEL	Belgium	1	1	1	1	1
109	CYP	Cyprus	0	0	0	0	0
110	DNK	Denmark	1	1	1	1	1
111	FIN	Finland	1	1	1	1	1
112	FRA	France	1	1	1	1	1
113	DEU	Germany, West	1	0	0	1	1
114	GRC	Greece	1	1	1	1	1
115	HUN	Hungary	0	0	0	0	0
116	ISL	Iceland	0	0	0	0	0
117	IRL	Ireland	1	1	1	1	1
118	ITA	Italy	1	1	1	1	1
119	LUX	Luxembourg	0	0	0	0	0
120	MLT	Malta	0	0	0	0	0
121	NLD	Netherlands	1	1	1	1	1
122	NOR	Norway	1	1	1	1	1
123	POL	Poland	0	0	0	0	0
124	PRT	Portugal	1	1	1	1	1
125	ESP	Spain	1	1	1	1	1
126	SWE	Sweden	1	1	1	1	1
127	CHE	Switzerland	0	0	0	0	0
128	TUR	Turkey	1	1	1	1	1
129	GBR	United Kingdom	1	1	1	1	1
130	YUG	Yugoslavia	0	0	0	0	0
131	AUS	Australia	1	1	1	1	1
132	FJI	Fiji	0	0	0	0	0
133	NZL	New Zealand	1	1	1	1	1
134	PNG	Papua New Guinea	1	1	0	1	1
135	SLB	Solomon Islands	0	0	0	0	0
136	TON	Tonga	0	0	0	0	0
137	VUT	Vanuatu	0	0	0	0	0
138	WSM	Samoa	0	0	0	0	0
139	NAM	Namibia	0	0	0	0	0
Sample size			88	84	79	87	86

Notes: The last two columns indicate countries for which income data are available from both the PWT and WDI.

Appendix B. Recent Revisions of the PWT Dataset

The Penn World Table 6.2, issued in September 2006, followed the Penn World Table 6.1, issued in October 2002, which in turn replaced the preliminary PWT 6.0 dataset of 2001. Below we describe the differences between these three datasets regarding per capita GDP in constant international prices computed with the chain method (PWT mnemonics: RGDPCH). We focus on its 1960 level and growth rate in 1960-1996. We confine the analysis to the countries for which we have all the control variables from the Sala-i-Martin, Doppelhofer, and Miller (2004) dataset of country characteristics.

The original sample in Sala-i-Martin, Doppelhofer, and Miller (2004) contains 88 countries. When upgrading from PWT 6.0 to PWT 6.1, four countries for which data are unavailable in the later dataset are lost (Liberia, Tunisia, Haiti, and West Germany) and the sample decreases to 84 countries. When upgrading further to PWT 6.2, five more countries are lost (Botswana, Central African Republic, Mauritania, Zaire, Papua New Guinea) and the remaining sample has only 79 countries.

The upgrades of the dataset involved changes in the base year for international prices. The base year is 1985 in PWT 6.0, 1996 in PWT 6.1, and 2000 in PWT 6.2. When comparing 1960 income levels we demean it (in the analyzed samples) and compare deviations from the mean.

Summary statistics about revisions are reported in Table B1. The revisions are quite substantial. Yearly growth rates change on average by around 0.3%, but the largest differences exceed 3%. 1960 income levels change on average by around 20%. The largest log differences exceed 1. Still, overall correlations between the level and growth estimates of different datasets are high, always above 0.9.

Figure B1 reports the histograms of differences in 1960-1996 average annual growth rates and demeaned log 1960 income levels between PWT 6.1 and PWT 6.0. Figure B2 reports the histograms of differences between PWT 6.2 and PWT 6.1. Figure B3 reports the histograms of the difference between PWT 6.2 and PWT 6.0.

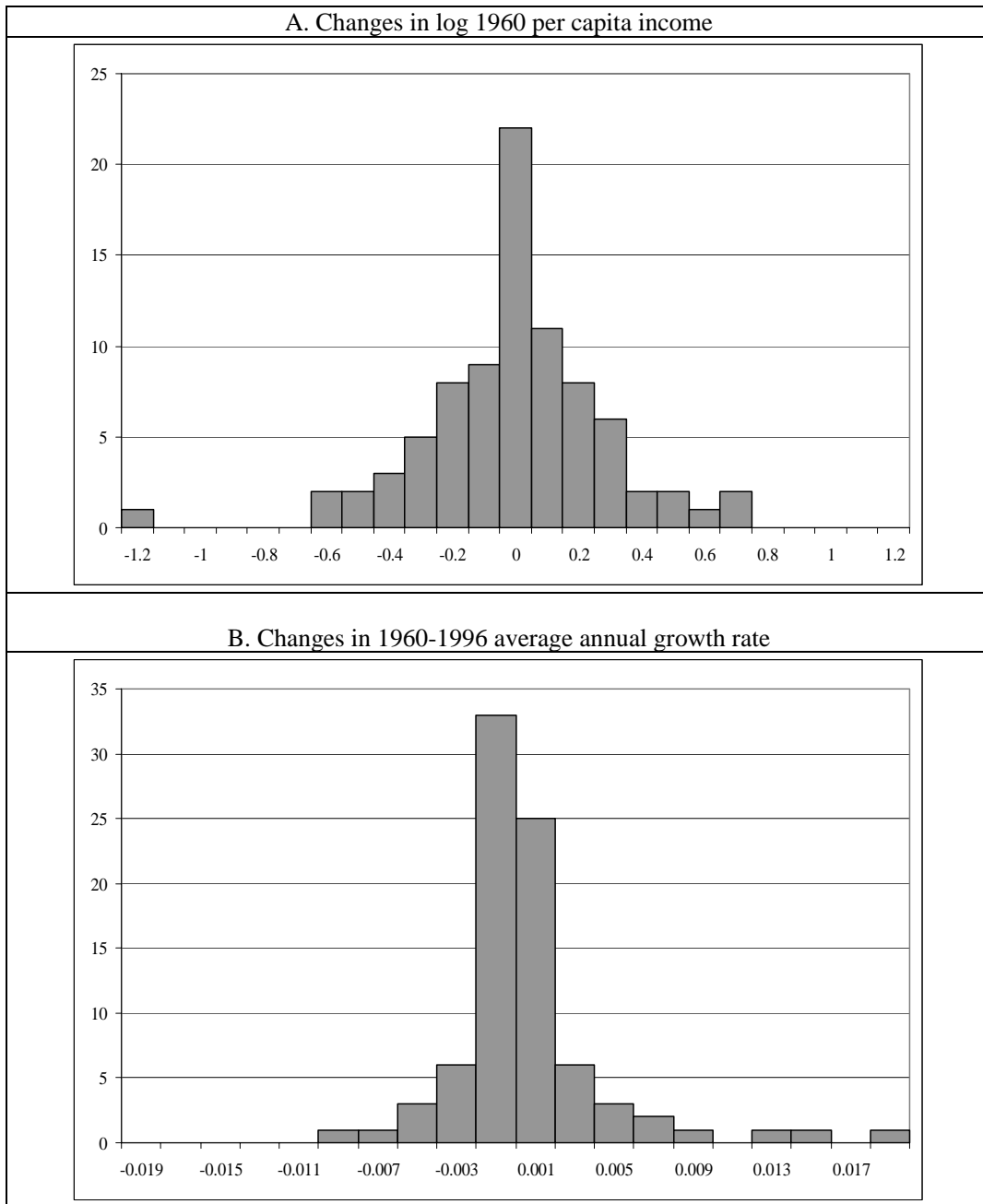
Table B2 reports on the 15 countries with most revised growth and level data, for each pair of datasets. As the table makes clear, African countries' data undergoes the strongest revisions. Some examples are striking. For example, in 1960-1996 Ghana had a negative yearly growth rate of 0.4% according to the PWT 6.0 dataset, positive yearly growth of 1% according to the PWT 6.1 dataset, and a yearly growth rate of 3% according to the PWT 6.2 dataset. In terms of the initial income level, it was downgraded from being the 25th country from the top to the second poorest country.

Table B1. Summary statistics about differences between PWT versions 6.2, 6.1, and 6.0

	PWT 6.2-6.1	PWT 6.1-6.0	PWT 6.2-6.0
1960-1996 growth per year:			
- average absolute difference	0.36%	0.23%	0.39%
- maximum absolute difference	1.94%	1.98%	3.44%
Correlation	0.937	0.977	0.926
Log 1960 (demeaned):			
- average absolute difference	0.17	0.21	0.24
- maximum absolute difference	0.84	1.21	1.26
Correlation	0.97	0.95	0.93

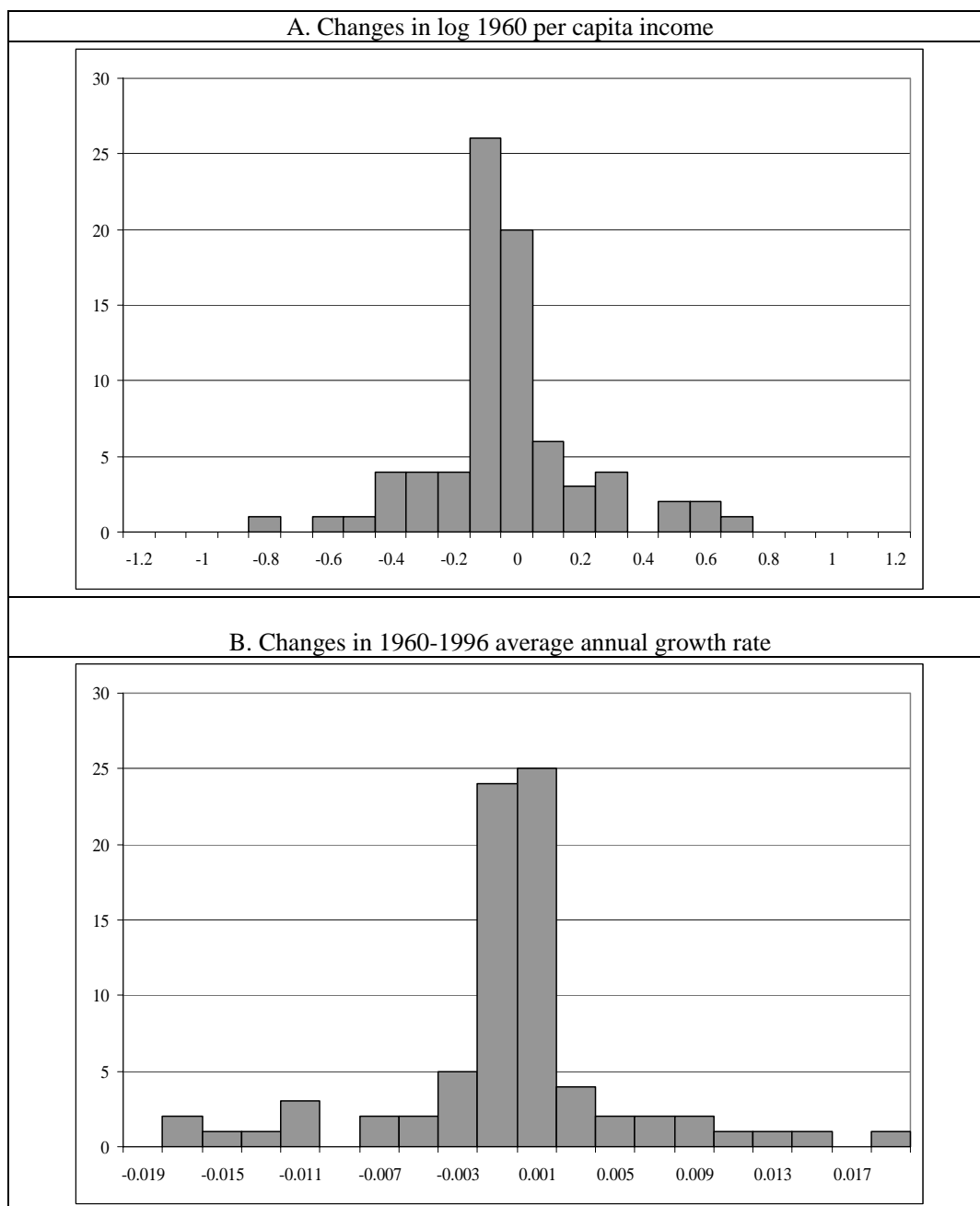
Notes: Average yearly growth differences are in percentage points.

Figure B1. Histograms of changes in income level and growth data between PWT 6.1 and PWT 6.0



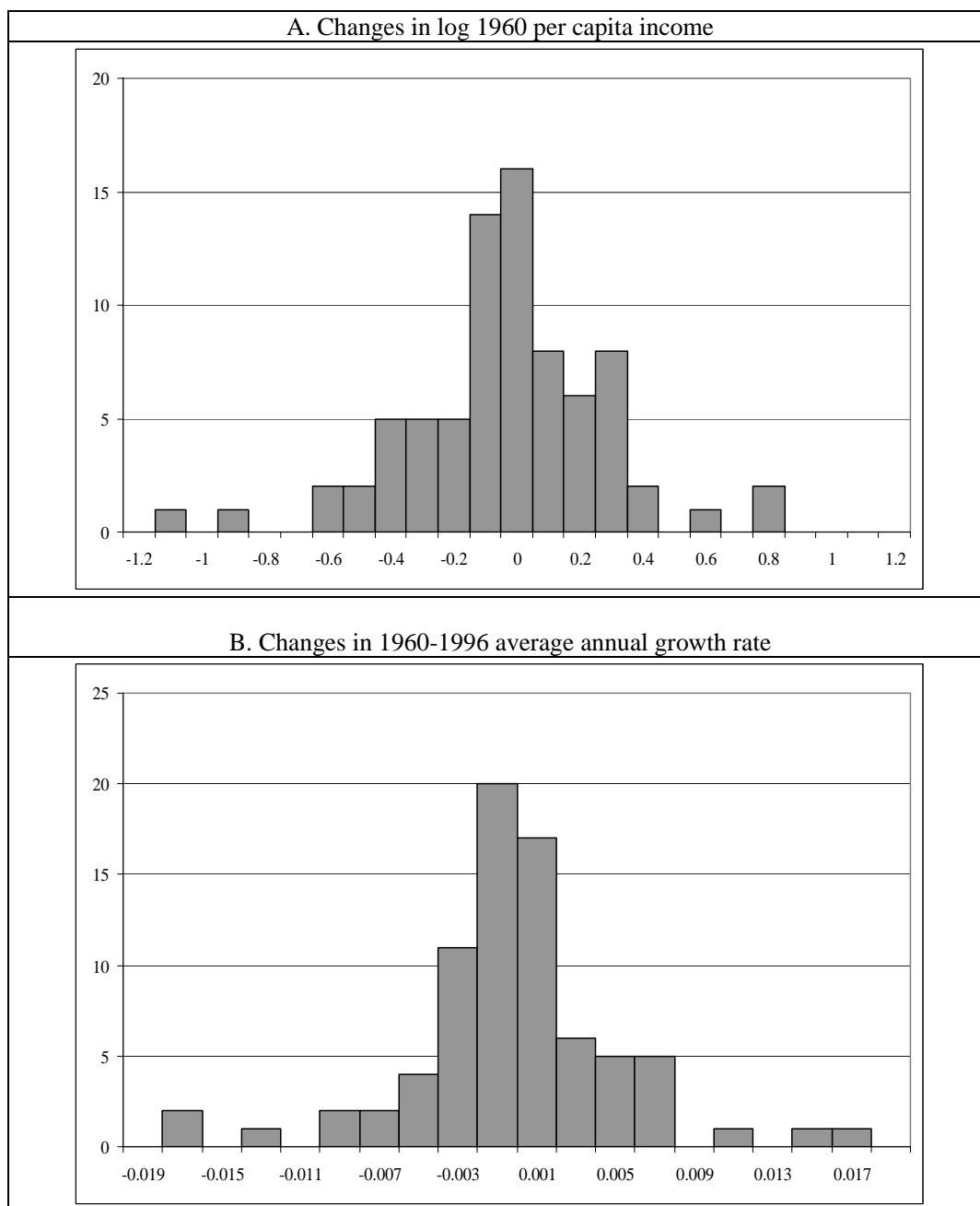
Notes: Panel A: Log per capita GDP differences across datasets (constant international prices, chained) in 1960 and 1996. Changes are demeaned to eliminate the effect of changes in the base year. Panel B: Changes in average annual growth rates of per capita GDP over the 1960-1996 period (constant international prices, chained). Labels show the middle of a bin. Sources: PWT 6.0 and PWT 6.1 data, authors' calculations.

Figure B2. Histograms of changes in income level and growth data between PWT 6.2 and PWT 6.1



Notes: Panel A: Log per capita GDP differences across datasets (constant international prices, chained) in 1960 and 1996. Changes are demeaned to eliminate the effect of changes in the base year. Panel B: Changes in average annual growth rates of per capita GDP over the 1960-1996 period (constant international prices, chained). Labels show the middle of a bin. Ghana (whose growth rate increased by 0.034) is omitted, to keep the scale the same as in the previous graphs. Sources: PWT 6.2 and PWT 6.1 data, authors' calculations.

Figure B3. Histograms of changes in income level and growth data between PWT 6.2 and PWT 6.0



Notes: Panel A: Log per capita GDP differences across datasets (constant international prices, chained) in 1960 and 1996. Changes are demeaned to eliminate the effect of changes in the base year. Panel B: Changes in average annual growth rates of per capita GDP over the 1960-1996 period (constant international prices, chained). Labels show the middle of a bin. Sources: PWT 6.0 and PWT 6.2 data, authors' calculations.

Table B2. Largest revisions of the 1960-1996 growth and 1960 income level

Countries ranked by largest 1960-1996 growth differences			Countries ranked by largest 1960 income differences		
	1960-1996 yearly growth	1960 income (log)		1960-1996 yearly growth	1960 income (log)
PWT 6.2-6.1					
Ghana	0.019	-0.84	Ghana	0.019	-0.84
Singapore	-0.017	0.57	Gabon	-0.011	0.70
Jordan	-0.016	0.50	Syria	-0.005	-0.62
Zimbabwe	-0.015	0.52	Congo	-0.013	0.62
Sri Lanka	0.014	-0.53	Singapore	-0.017	0.57
Congo	-0.013	0.62	Sri Lanka	0.014	-0.53
Ethiopia	0.012	-0.38	Zimbabwe	-0.015	0.52
Gabon	-0.011	0.70	Jordan	-0.016	0.50
Uganda	-0.011	0.34	Niger	0.009	-0.43
Lesotho	0.010	-0.29	Zambia	0.008	-0.38
Kenya	-0.010	0.29	Ethiopia	0.012	-0.38
Niger	0.009	-0.43	Venezuela	0.009	-0.35
Venezuela	0.009	-0.35	Uganda	-0.011	0.34
Zambia	0.008	-0.38	Gambia	-0.002	-0.32
Malaysia	0.007	-0.26	Lesotho	0.010	-0.29
PWT 6.1-6.0					
Congo	0.020	-1.21	Congo	0.020	-1.21
Ghana	0.015	-0.42	Cent'l Afr. Rep.	0.001	0.74
Zimbabwe	0.014	-0.17	Niger	-0.002	0.73
			Trinidad &		
Lesotho	-0.009	0.41	Tobago	0.000	-0.64
Zambia	0.009	-0.17	Cameroon	0.001	0.57
Pakistan	0.007	-0.40	Burundi	0.000	-0.57
Gambia	0.007	0.02	Syria	0.000	-0.50
Venezuela	-0.006	-0.18	Togo	0.001	0.50
Malawi	0.005	-0.29	Uganda	-0.002	-0.45
Papua New Guinea	0.005	0.18	El Salvador	-0.001	0.45
Algeria	0.005	0.05	South Africa	-0.001	0.43
Indonesia	-0.005	-0.01	Ghana	0.015	-0.42
Rwanda	-0.005	0.17	Benin	0.000	-0.42
Paraguay	-0.004	0.33	Lesotho	-0.009	0.41
Madagascar	0.004	-0.35	Pakistan	0.007	-0.40
PWT 6.2-6.0					
Ghana	0.034	-1.26	Ghana	0.034	-1.26
Singapore	-0.018	0.44	Syria	-0.005	-1.12
Jordan	-0.017	0.78	Sri Lanka	0.016	-0.86
Zambia	0.016	-0.55	Gabon	-0.009	0.84
Sri Lanka	0.016	-0.86	Jordan	-0.017	0.78
Uganda	-0.013	-0.11	Benin	0.004	-0.63

Ethiopia	0.010	-0.05	Cameroon	0.000	0.62
Gabon	-0.009	0.84	Congo	0.006	-0.60
Indonesia	-0.009	0.03	Zambia	0.016	-0.55
Kenya	-0.008	0.09	Venezuela	0.003	-0.53
Niger	0.008	0.30	Singapore	-0.018	0.44
Malaysia	0.007	-0.25	Burundi	-0.001	-0.43
Trinidad & Tobago	-0.007	-0.38	Madagascar	0.005	-0.43
			Trinidad &		
Congo	0.006	-0.60	Tobago	-0.007	-0.38
Pakistan	0.006	-0.26	Thailand	0.001	-0.37

Part C: Additional Results

Table C1. Determinants of 1960-1996 income growth, Bayesian model averaging with benchmark priors of FLS, prior model size 67/2

	PWT 6.2	PWT 6.1	PWT 6.0	PWT 6.2/6.1	PWT 6.2/6.0
	Posterior inclusion probabilities			MAX/MIN	MAX/MIN
GDP in 1960 (log)	1.00	1.00	0.73	1.00	1.37
Primary Schooling in 1960	1.00	0.99	0.80	1.01	1.25
African Dummy	0.85	0.22	0.18	3.95	4.66
Fraction Confucius	0.84	0.17	0.23	4.82	3.71
Fraction Muslim	0.42	0.22	0.13	1.93	3.29
East Asian Dummy	0.32	0.74	0.81	2.28	2.50
Fraction Buddhist	0.30	0.13	0.12	2.29	2.42
Population Density Coastal in 1960s	0.11	0.77	0.44	7.09	4.00
Fertility in 1960s	0.89	0.16	0.04	5.72	21.78
Latin American Dummy	0.35	0.08	0.17	4.30	2.08
Primary Exports 1970	0.28	0.22	0.06	1.28	4.70
Fraction of Tropical Area	0.06	0.67	0.56	12.04	10.05
Life Expectancy in 1960	0.04	0.25	0.24	7.11	6.74
Investment Price	0.03	0.98	0.80	39.28	31.92
Fraction GDP in Mining	0.02	0.27	0.16	14.21	8.16
Nominal Government GDP Share 1960s	0.29	0.02	0.04	16.28	6.66
Openness Measure 1965-74	0.16	0.06	0.09	2.76	1.90
Timing of Independence	0.13	0.08	0.02	1.63	5.42
Hydrocarbon Deposits in 1993	0.11	0.13	0.03	1.18	3.73
Years Open 1950-94	0.09	0.06	0.12	1.47	1.36
Spanish Colony	0.07	0.03	0.13	2.62	1.84
Air Distance to Big Cities	0.05	0.45	0.05	8.73	1.06
Ethnolinguistic Fractionalization	0.04	0.03	0.11	1.50	2.71
Fraction Population in Tropics	0.04	0.16	0.06	4.05	1.48
Gov. Consumption Share 1960s	0.03	0.06	0.12	1.83	3.97
Malaria Prevalence in 1960s	0.03	0.03	0.23	1.00	9.28
Political Rights	0.02	0.24	0.07	10.13	3.04
Population Density 1960	0.02	0.72	0.11	37.89	5.53
Fraction Protestants	0.08	0.02	0.05	4.39	1.68
Fraction Speaking Foreign Language	0.07	0.05	0.10	1.52	1.41
Fraction Catholic	0.07	0.02	0.04	2.92	1.75
European Dummy	0.07	0.04	0.04	1.95	2.06
Average Inflation 1960-90	0.06	0.02	0.02	2.67	2.43
Government Share of GDP in 1960s	0.05	0.04	0.08	1.27	1.52
Fraction Population Over 65	0.05	0.05	0.03	1.02	1.93
Square of Inflation 1960-90	0.04	0.02	0.02	2.11	1.82
Size of Economy	0.04	0.03	0.03	1.41	1.46
Tropical Climate Zone	0.04	0.03	0.02	1.24	1.80
Defence Spending Share	0.04	0.02	0.02	1.64	1.50
Fraction Population Less than 15	0.03	0.03	0.05	1.21	1.35
Landlocked Country Dummy	0.03	0.09	0.02	2.93	1.36
Revolutions and Coups	0.03	0.03	0.04	1.03	1.13
Population Growth Rate 1960-90	0.03	0.03	0.02	1.19	1.39
Higher Education 1960	0.03	0.02	0.07	1.67	2.23

Absolute Latitude	0.03	0.03	0.03	1.14	1.21
Fraction Orthodox	0.03	0.02	0.02	1.71	1.71
Fraction Hindus	0.03	0.02	0.05	1.35	1.65
Interior Density	0.03	0.02	0.02	1.43	1.67
War Participation 1960-90	0.03	0.02	0.02	1.38	1.53
Socialist Dummy	0.03	0.03	0.02	1.31	1.13
Colony Dummy	0.02	0.09	0.04	4.04	1.57
Public Investment Share	0.02	0.06	0.07	2.50	3.09
Oil Producing Country Dummy	0.02	0.02	0.02	1.21	1.00
Capitalism	0.02	0.02	0.02	1.16	1.22
Land Area	0.02	0.02	0.02	1.10	1.35
Real Exchange Rate Distortions	0.02	0.05	0.10	2.29	4.76
British Colony Dummy	0.02	0.03	0.03	1.23	1.41
Population in 1960	0.02	0.02	0.03	1.17	1.56
Public Education Spending Share in GDP in 1960s	0.02	0.02	0.02	1.06	1.26
Fraction of Land Area Near Navigable Water	0.02	0.05	0.02	2.67	1.22
Religion Measure	0.02	0.03	0.02	1.63	1.21
Fraction Spent in War 1960-90	0.02	0.02	0.02	1.00	1.12
Civil Liberties	0.02	0.02	0.03	1.28	1.83
Terms of Trade Growth in 1960s	0.02	0.03	0.02	1.50	1.28
English Speaking Population	0.02	0.02	0.03	1.00	1.47
Terms of Trade Ranking	0.02	0.02	0.02	1.06	1.06
Outward Orientation	0.02	0.04	0.04	2.12	2.24
Average for all variables				3.97	3.30

Notes: Posterior inclusion probabilities of variables from the Sala-i-Martin, Doppelhofer, and Miller (2004) dataset, combined with income data from Penn World Table versions 6.2, 6.1, and 6.0. MAX/MIN is the ratio of the larger to the smaller inclusion probability between datasets.

Table C2. Unconditional mean effects on 1960-1996 income growth, Bayesian model averaging with benchmark priors of FLS, prior model size 67/2

	PWT 6.2	PWT 6.1	PWT 6.0
Unconditional mean effects			
GDP in 1960 (log)	-1.28	-1.35	-0.57
Primary Schooling in 1960	0.92	0.95	0.63
African Dummy	-0.55	-0.12	-0.13
Fraction Confucius	0.36	0.06	0.09
Fraction Muslim	0.17	0.09	0.05
East Asian Dummy	0.13	0.36	0.54
Fraction Buddhist	0.09	0.04	0.04
Population Density Coastal in 1960s	0.02	0.38	0.19
Fertility in 1960s	-0.67	-0.10	-0.01
Latin American Dummy	-0.13	-0.03	-0.09
Primary Exports 1970	-0.10	-0.10	-0.02
Fraction of Tropical Area	-0.01	-0.45	-0.39
Life Expectancy in 1960	0.01	0.18	0.23
Investment Price	0.00	-0.46	-0.36
Fraction GDP in Mining	0.00	0.10	0.05
Nominal Government GDP Share 1960s	-0.08	0.00	-0.01
Openness Measure 1965-74	0.04	0.02	0.03
Timing of Independence	-0.04	-0.03	0.00
Hydrocarbon Deposits in 1993	0.02	0.04	0.00
Years Open 1950-94	0.02	0.02	0.05
Spanish Colony	-0.02	0.00	-0.05
Air Distance to Big Cities	-0.01	-0.17	-0.01
Ethnolinguistic Fractionalization	0.01	0.00	-0.04
Fraction Population in Tropics	-0.01	-0.08	-0.02
Gov. Consumption Share 1960s	0.00	-0.01	-0.04
Malaria Prevalence in 1960s	0.00	0.00	-0.15
Political Rights	0.00	-0.10	-0.03
Population Density 1960	0.00	0.29	0.03
Fraction Protestants	-0.03	0.00	-0.02
Fraction Speaking Foreign Language	0.01	0.01	0.03
Fraction Catholic	-0.03	0.00	-0.01
European Dummy	0.02	0.01	0.00
Average Inflation 1960-90	-0.01	0.00	0.00
Government Share of GDP in 1960s	-0.01	-0.01	-0.02
Fraction Population Over 65	0.02	0.02	0.00
Square of Inflation 1960-90	0.00	0.00	0.00
Size of Economy	0.01	0.00	0.00
Tropical Climate Zone	0.00	0.00	0.00
Defence Spending Share	0.00	0.00	0.00
Fraction Population Less than 15	0.00	0.00	0.02
Landlocked Country Dummy	0.00	-0.02	0.00
Revolutions and Coups	0.00	0.00	-0.01
Population Growth Rate 1960-90	0.00	0.00	0.00
Higher Education 1960	0.00	0.00	-0.02
Absolute Latitude	0.00	0.01	0.01
Fraction Orthodox	0.00	0.00	0.00
Fraction Hindus	0.00	0.00	0.01
Interior Density	0.00	0.00	0.00
War Participation 1960-90	0.00	0.00	0.00

Socialist Dummy	0.00	0.00	0.00
Colony Dummy	0.00	-0.03	-0.01
Public Investment Share	0.00	-0.01	-0.02
Oil Producing Country Dummy	0.00	0.00	0.00
Capitalism	0.00	0.00	0.00
Land Area	0.00	0.00	0.00
Real Exchange Rate Distortions	0.00	-0.01	-0.03
British Colony Dummy	0.00	0.00	0.01
Population in 1960	0.00	0.00	0.00
Public Education Spending Share in GDP in 1960s	0.00	0.00	0.00
Fraction of Land Area Near Navigable Water	0.00	0.01	0.00
Religion Measure	0.00	0.00	0.00
Fraction Spent in War 1960-90	0.00	0.00	0.00
Civil Liberties	0.00	0.00	-0.01
Terms of Trade Growth in 1960s	0.00	0.00	0.00
English Speaking Population	0.00	0.00	0.00
Terms of Trade Ranking	0.00	0.00	0.00
Outward Orientation	0.00	0.00	-0.01

Notes: Variables from the Sala-i-Martin, Doppelhofer, and Miller (2004) dataset, combined with income data from Penn World Table versions 6.2, 6.1, and 6.0.

Table C3. Determinants of 1960-1996 income growth, Bayesian model averaging with benchmark priors of FLS, prior model size 7

	PWT 6.2	PWT 6.1	PWT 6.0	PWT 6.2/6.1	PWT 6.2/6.0
	Posterior inclusion probabilities			MAX/MIN	MAX/MIN
GDP in 1960 (log)	0.99	0.94	0.03	1.06	32.97
Primary Schooling in 1960	0.94	0.65	0.23	1.45	4.20
African Dummy	0.89	0.07	0.01	13.27	98.78
Fraction Confucius	0.56	0.08	0.03	7.51	19.41
Fraction Muslim	0.08	0.07	0.01	1.13	8.89
East Asian Dummy	0.49	0.84	0.99	1.72	2.02
Fraction Buddhist	0.07	0.03	0.01	2.65	7.67
Population Density Coastal in 1960s	0.04	0.35	0.03	9.11	1.52
Fertility in 1960s	0.81	0.04	0.01	18.32	134.33
Latin American Dummy	0.28	0.03	0.01	8.12	19.71
Primary Exports 1970	0.18	0.11	0.03	1.68	5.90
Fraction of Tropical Area	0.03	0.48	0.18	15.13	5.47
Life Expectancy in 1960	0.07	0.37	0.07	5.58	1.03
Investment Price	0.00	0.75	0.07	374.00	37.00
Fraction GDP in Mining	0.00	0.09	0.01	46.00	2.50
Nominal Government GDP Share 1960s	0.02	0.00	0.00	6.67	10.00
Openness Measure 1965-74	0.02	0.06	0.01	2.63	1.71
Timing of Independence	0.01	0.00	0.00	2.33	2.33
Hydrocarbon Deposits in 1993	0.01	0.01	0.00	1.25	3.33
Years Open 1950-94	0.02	0.06	0.06	3.87	3.67
Spanish Colony	0.03	0.01	0.07	3.63	2.24
Air Distance to Big Cities	0.01	0.08	0.00	7.00	5.50
Ethnolinguistic Fractionalization	0.01	0.01	0.02	1.14	3.43
Fraction Population in Tropics	0.03	0.16	0.03	6.12	1.04
Gov. Consumption Share 1960s	0.01	0.01	0.05	2.60	10.20
Malaria Prevalence in 1960s	0.02	0.03	0.78	1.30	33.78
Political Rights	0.00	0.07	0.01	23.33	1.67
Population Density 1960	0.00	0.16	0.00	79.50	1.00
Fraction Protestants	0.01	0.00	0.01	3.00	1.80
Fraction Speaking Foreign Language	0.01	0.01	0.01	1.86	1.40
Fraction Catholic	0.01	0.00	0.00	4.33	4.33
European Dummy	0.01	0.01	0.01	1.80	1.50
Average Inflation 1960-90	0.01	0.00	0.01	2.50	2.00
Government Share of GDP in 1960s	0.01	0.01	0.01	1.00	2.80
Fraction Population Over 65	0.01	0.01	0.01	1.20	1.17
Square of Inflation 1960-90	0.01	0.00	0.00	1.75	2.33
Size of Economy	0.00	0.00	0.00	2.00	1.50
Tropical Climate Zone	0.01	0.00	0.00	1.67	1.25
Defence Spending Share	0.01	0.01	0.00	1.67	1.50
Fraction Population Less than 15	0.01	0.00	0.01	3.00	1.80
Landlocked Country Dummy	0.01	0.01	0.00	1.80	2.50
Revolutions and Coups	0.00	0.00	0.01	1.00	2.33
Population Growth Rate 1960-90	0.01	0.00	0.00	1.75	1.75
Higher Education 1960	0.00	0.00	0.01	2.00	1.75
Absolute Latitude	0.01	0.08	0.02	12.83	2.83
Fraction Orthodox	0.00	0.00	0.00	1.50	1.00
Fraction Hindus	0.00	0.00	0.00	1.00	1.33
Interior Density	0.00	0.00	0.00	1.50	1.50

War Participation 1960-90	0.00	0.00	0.00	1.50	1.50
Socialist Dummy	0.00	0.00	0.00	1.33	1.33
Colony Dummy	0.01	0.02	0.01	3.60	1.40
Public Investment Share	0.00	0.00	0.00	1.00	1.50
Oil Producing Country Dummy	0.00	0.00	0.00	1.00	1.50
Capitalism	0.00	0.00	0.00	1.00	1.00
Land Area	0.00	0.00	0.00	2.00	1.00
Real Exchange Rate Distortions	0.00	0.01	0.02	3.00	6.00
British Colony Dummy	0.00	0.00	0.01	1.00	2.00
Population in 1960	0.00	0.00	0.00	1.50	1.50
Public Education Spending Share in GDP in 1960s	0.00	0.00	0.00	2.00	3.00
Fraction of Land Area Near Navigable Water	0.00	0.00	0.00	2.00	1.00
Religion Measure	0.00	0.00	0.00	1.50	1.00
Fraction Spent in War 1960-90	0.00	0.00	0.00	1.00	1.50
Civil Liberties	0.00	0.00	0.01	1.33	1.67
Terms of Trade Growth in 1960s	0.00	0.00	0.00	1.00	1.50
English Speaking Population	0.00	0.00	0.00	1.00	1.00
Terms of Trade Ranking	0.00	0.00	0.00	1.00	1.00
Outward Orientation	0.00	0.00	0.00	1.00	1.50
Average for all variables				10.84	7.93

Notes: Posterior inclusion probabilities of variables from the Sala-i-Martin, Doppelhofer, and Miller (2004) dataset, combined with income data from Penn World Table versions 6.2, 6.1, and 6.0. MAX/MIN is the ratio of the larger to the smaller inclusion probability between datasets.

Table C4. Unconditional mean effects on 1960-1996 income growth, Bayesian model averaging with benchmark priors of FLS, prior model size 7

	PWT 6.2	PWT 6.1	PWT 6.0
	Unconditional mean effects		
GDP in 1960 (log)	-1.23	-1.03	-0.02
Primary Schooling in 1960	0.78	0.64	0.14
African Dummy	-0.60	-0.05	0.00
Fraction Confucius	0.26	0.04	0.01
Fraction Muslim	0.03	0.03	0.00
East Asian Dummy	0.26	0.53	0.93
Fraction Buddhist	0.02	0.01	0.00
Population Density Coastal in 1960s	0.01	0.18	0.01
Fertility in 1960s	-0.64	-0.04	0.00
Latin American Dummy	-0.11	-0.02	0.00
Primary Exports 1970	-0.09	-0.06	-0.01
Fraction of Tropical Area	-0.01	-0.35	-0.11
Life Expectancy in 1960	0.07	0.46	0.05
Investment Price	0.00	2.36	-0.03
Fraction GDP in Mining	0.00	0.03	0.00
Nominal Government GDP Share 1960s	-0.01	0.00	0.00
Openness Measure 1965-74	0.01	0.03	0.00
Timing of Independence	0.00	0.00	0.00
Hydrocarbon Deposits in 1993	0.00	0.00	0.00
Years Open 1950-94	0.00	0.03	0.03
Spanish Colony	-0.01	0.00	-0.03
Air Distance to Big Cities	0.00	-0.03	0.00
Ethnolinguistic Fractionalization	0.00	0.00	-0.01
Fraction Population in Tropics	-0.01	-0.09	-0.01
Gov. Consumption Share 1960s	0.00	0.00	-0.02
Malaria Prevalence in 1960s	-0.01	-0.02	-0.72
Political Rights	0.00	-0.03	0.00
Population Density 1960	0.00	0.06	0.00
Fraction Protestants	0.00	0.00	0.00
Fraction Speaking Foreign Language	0.00	0.00	0.00
Fraction Catholic	0.00	0.00	0.00
European Dummy	0.00	0.00	0.00
Average Inflation 1960-90	0.00	0.00	0.00
Government Share of GDP in 1960s	0.00	0.00	0.00
Fraction Population Over 65	0.00	0.00	0.00
Square of Inflation 1960-90	0.00	0.00	0.00
Size of Economy	0.00	0.00	0.00
Tropical Climate Zone	0.00	0.00	0.00
Defence Spending Share	0.00	0.00	0.00
Fraction Population Less than 15	0.00	0.00	0.00
Landlocked Country Dummy	0.00	0.00	0.00
Revolutions and Coups	0.00	0.00	0.00
Population Growth Rate 1960-90	0.00	0.00	0.00
Higher Education 1960	0.00	0.00	0.00
Absolute Latitude	0.00	0.05	0.01
Fraction Orthodox	0.00	0.00	0.00
Fraction Hindus	0.00	0.00	0.00
Interior Density	0.29	0.00	0.00
War Participation 1960-90	0.00	0.00	0.00

Socialist Dummy	0.00	0.00	0.00
Colony Dummy	0.00	-0.01	0.00
Public Investment Share	0.00	0.00	0.00
Oil Producing Country Dummy	0.00	0.00	0.00
Capitalism	0.00	0.00	0.00
Land Area	0.00	0.00	0.00
Real Exchange Rate Distortions	0.00	0.00	-0.01
British Colony Dummy	0.00	0.00	0.00
Population in 1960	0.00	0.00	0.00
Public Education Spending Share in GDP in 1960s	0.00	0.00	0.00
Fraction of Land Area Near Navigable Water	0.00	0.00	0.00
Religion Measure	0.00	0.00	0.00
Fraction Spent in War 1960-90	0.00	0.00	0.00
Civil Liberties	0.00	0.00	0.00
Terms of Trade Growth in 1960s	0.00	0.00	0.00
English Speaking Population	0.00	0.00	0.00
Terms of Trade Ranking	0.00	0.00	0.00
Outward Orientation	0.00	0.00	0.00

Notes: Variables from the Sala-i-Martin, Doppelhofer, and Miller (2004) dataset, combined with income data from Penn World Table versions 6.2, 6.1, and 6.0.

Table C5. Determinants of 1975-1996 income growth, Bayesian model averaging with benchmark priors of FLS, prior model size 67/2

	Posterior inclusion probabilities			Unconditional mean effects	
	PWT 6.2	WDI	MAX/MIN	PWT 6.2	WDI
East Asian Dummy	0.97	0.99	1.01	0.84	0.79
Investment Price	0.97	0.23	4.18	-0.90	-0.08
GDP in 1975 (log)	0.90	1.00	1.11	-1.13	-1.57
Life Expectancy in 1975	0.88	0.96	1.09	1.14	1.17
Fraction of Tropical Area	0.72	0.67	1.08	-0.50	-0.55
Fraction GDP in Mining	0.33	0.18	1.82	0.12	0.06
Absolute Latitude	0.22	0.32	1.50	0.14	0.26
Fraction Confucius	0.14	0.07	2.03	0.05	0.02
Primary Schooling in 1975	0.10	0.04	2.94	-0.04	-0.01
Openness Measure 1965-74	0.10	0.18	1.79	0.03	0.07
Political Rights	0.10	0.26	2.55	-0.04	-0.14
Real Exchange Rate Distortions	0.09	0.34	3.69	-0.03	-0.15
British Colony Dummy	0.09	0.13	1.37	0.02	0.04
Public Investment Share	0.09	0.03	2.90	-0.03	-0.01
Years Open 1950-94	0.08	0.32	4.19	0.03	0.17
Population Density Coastal in 1960s	0.08	0.08	1.07	0.02	0.03
Population Density 1975	0.08	0.08	1.05	0.02	0.02
African Dummy	0.07	0.03	2.48	-0.04	-0.01
Fraction Buddhist	0.06	0.03	2.19	0.02	0.00
Fraction Population in Tropics	0.06	0.04	1.55	-0.02	-0.01
Terms of Trade Ranking	0.05	0.06	1.21	-0.01	-0.02
Fraction Speaking Foreign Language	0.05	0.12	2.43	0.01	0.04
Malaria Prevalence in 1960s	0.05	0.10	1.94	-0.02	-0.04
Revolutions and Coups	0.04	0.03	1.52	-0.01	0.00
Ethnolinguistic Fractionalization	0.04	0.06	1.38	-0.01	-0.02
Higher Education 1975	0.04	0.04	1.02	-0.01	-0.01
Latin American Dummy	0.04	0.03	1.58	-0.01	0.00
Fraction Muslim	0.04	0.06	1.37	0.01	0.01
Population in 1975	0.04	0.05	1.18	0.01	0.01
Fraction Hindus	0.04	0.03	1.17	0.01	0.00
Fraction Orthodox	0.04	0.03	1.40	-0.01	0.00
Government Share of GDP in 1970s	0.03	0.03	1.26	-0.01	0.00
Capitalism	0.03	0.03	1.11	0.00	0.00
Civil Liberties	0.03	0.03	1.03	0.01	0.01
Timing of Independence	0.03	0.03	1.00	-0.01	-0.01
Fraction Population Less than 15	0.03	0.02	1.42	-0.01	0.00
Gov. Consumption Share 1970s	0.03	0.17	6.33	0.00	-0.06
Average Inflation 1960-90	0.03	0.02	1.53	0.00	0.00
Land Area	0.03	0.03	1.04	0.00	0.00
Nominal Government GDP Share 1970s	0.03	0.02	1.25	0.00	0.00
Religion Measure	0.02	0.02	1.20	0.00	0.00
Fraction Spent in War 1960-90	0.02	0.02	1.50	0.00	0.00
Size of Economy	0.02	0.02	1.14	0.00	0.00
Fraction Population Over 65	0.02	0.03	1.13	0.00	0.00
Defence Spending Share	0.02	0.05	2.17	0.00	0.01
Fraction Protestants	0.02	0.04	1.64	0.00	-0.01
Fraction Catholic	0.02	0.02	1.05	0.00	0.00
Fraction of Land Area Near Navigable Water	0.02	0.02	1.05	0.00	0.00

Square of Inflation 1960-90	0.02	0.02	1.31	0.00	0.00
Air Distance to Big Cities	0.02	0.02	1.05	0.00	0.00
Interior Density	0.02	0.02	1.18	0.00	0.00
Population Growth Rate 1960-90	0.02	0.02	1.00	0.00	0.00
Fertility in 1960s	0.02	0.02	1.00	0.00	0.00
Spanish Colony	0.02	0.02	1.10	0.00	0.00
Colony Dummy	0.02	0.02	1.11	0.00	0.00
European Dummy	0.02	0.03	1.37	0.00	0.00
Primary Exports 1970	0.02	0.02	1.05	0.00	0.00
Terms of Trade Growth in 1960s	0.02	0.02	1.19	0.00	0.00
Public Education Spending Share in GDP in 1970s	0.02	0.02	1.16	0.00	0.00
Hydrocarbon Deposits in 1993	0.02	0.02	1.06	0.00	0.00
Oil Producing Country Dummy	0.02	0.02	1.12	0.00	0.00
Outward Orientation	0.02	0.04	2.12	0.00	-0.01
Tropical Climate Zone	0.02	0.04	2.53	0.00	0.01
English Speaking Population	0.02	0.02	1.19	0.00	0.00
Landlocked Country Dummy	0.02	0.02	1.00	0.00	0.00
War Participation 1960-90	0.02	0.02	1.19	0.00	0.00
Socialist Dummy	0.02	0.02	1.20	0.00	0.00
Average for all variables			1.62		

Notes: Variables from the Sala-i-Martin, Doppelhofer, and Miller (2004) dataset, combined with income data from Penn World Table version 6.2 and World Development Indicators.

Table C6. Determinants of 1975-1996 income growth, Bayesian model averaging with benchmark priors of FLS, prior model size 7

	Posterior inclusion probabilities			Unconditional mean effects	
	PWT 6.2	WDI	MAX/MIN	WDI	PWT 6.2
East Asian Dummy	0.98	1.00	1.01	0.98	0.90
Investment Price	0.82	0.03	24.03	-8.65	-0.01
GDP in 1975 (log)	0.13	0.97	7.54	-0.15	-1.55
Life Expectancy in 1975	0.13	0.97	7.22	0.18	1.59
Fraction of Tropical Area	0.63	0.65	1.03	-0.47	-0.53
Fraction GDP in Mining	0.01	0.01	2.00	0.00	0.00
Absolute Latitude	0.16	0.31	1.98	0.11	0.26
Fraction Confucius	0.03	0.01	3.25	0.01	0.00
Primary Schooling in 1975	0.00	0.00	2.00	0.00	0.00
Openness Measure 1965-74	0.00	0.02	4.50	0.00	0.01
Political Rights	0.01	0.03	3.88	0.00	-0.02
Real Exchange Rate Distortions	0.03	0.07	2.57	-0.01	-0.03
British Colony Dummy	0.02	0.02	1.06	0.01	0.00
Public Investment Share	0.01	0.00	3.00	0.00	0.00
Years Open 1950-94	0.01	0.06	4.38	0.01	0.03
Population Density Coastal in 1960s	0.01	0.01	1.67	0.00	0.00
Population Density 1975	0.01	0.01	1.43	0.00	0.00
African Dummy	0.02	0.00	7.67	-0.01	0.00
Fraction Buddhist	0.03	0.00	6.75	0.01	0.00
Fraction Population in Tropics	0.08	0.01	7.27	-0.03	-0.01
Terms of Trade Ranking	0.01	0.01	2.00	0.00	0.00
Fraction Speaking Foreign Language	0.01	0.01	2.33	0.00	0.00
Malaria Prevalence in 1960s	0.09	0.05	1.88	-0.07	-0.03
Revolutions and Coups	0.01	0.00	1.67	0.00	0.00
Ethnolinguistic Fractionalization	0.04	0.01	3.70	-0.02	0.00
Higher Education 1975	0.00	0.00	1.00	0.00	0.00
Latin American Dummy	0.01	0.01	1.60	0.00	0.00
Fraction Muslim	0.00	0.01	2.33	0.00	0.00
Population in 1975	0.00	0.00	1.33	0.00	0.00
Fraction Hindus	0.01	0.00	1.50	0.00	0.00
Fraction Orthodox	0.00	0.00	1.00	0.00	0.00
Government Share of GDP in 1970s	0.00	0.00	1.00	0.00	0.00
Capitalism	0.00	0.00	2.00	0.00	0.00
Civil Liberties	0.00	0.01	1.25	0.00	0.00
Timing of Independence	0.00	0.00	1.50	0.00	0.00
Fraction Population Less than 15	0.00	0.00	2.00	0.00	0.00
Gov. Consumption Share 1970s	0.00	0.02	5.67	0.00	-0.01
Average Inflation 1960-90	0.01	0.00	2.50	0.00	0.00
Land Area	0.00	0.00	1.00	0.00	0.00
Nominal Government GDP Share 1970s	0.00	0.00	2.00	0.00	0.00
Religion Measure	0.00	0.00	1.00	0.00	0.00
Fraction Spent in War 1960-90	0.01	0.00	3.00	0.00	0.00
Size of Economy	0.00	0.00	1.00	0.00	0.00
Fraction Population Over 65	0.00	0.00	1.00	0.00	0.00
Defence Spending Share	0.00	0.00	1.00	0.00	0.00
Fraction Protestants	0.00	0.00	2.00	0.00	0.00
Fraction Catholic	0.00	0.00	1.50	0.00	0.00
Fraction of Land Area Near Navigable Water	0.00	0.00	1.50	0.00	0.00

Square of Inflation 1960-90	0.01	0.00	2.50	0.00	0.00
Air Distance to Big Cities	0.00	0.00	1.00	0.00	0.00
Interior Density	0.00	0.00	2.00	0.00	0.00
Population Growth Rate 1960-90	0.00	0.00	1.00	0.00	0.00
Fertility in 1960s	0.00	0.00	1.00	0.00	0.00
Spanish Colony	0.00	0.00	1.00	0.00	0.00
Colony Dummy	0.00	0.00	1.00	0.00	0.00
European Dummy	0.00	0.00	1.50	0.00	0.00
Primary Exports 1970	0.00	0.00	1.00	0.00	0.00
Terms of Trade Growth in 1960s	0.00	0.00	1.33	0.00	0.00
Public Education Spending Share in GDP in 1970s	0.00	0.00	1.00	0.00	0.00
Hydrocarbon Deposits in 1993	0.00	0.00	1.50	0.00	0.00
Oil Producing Country Dummy	0.00	0.00	4.00	0.00	0.00
Outward Orientation	0.00	0.00	2.00	0.00	0.00
Tropical Climate Zone	0.00	0.00	1.33	0.00	0.00
English Speaking Population	0.00	0.00	1.00	0.00	0.00
Landlocked Country Dummy	0.00	0.00	1.50	0.00	0.00
War Participation 1960-90	0.00	0.00	2.00	0.00	0.00
Socialist Dummy	0.00	0.00	1.50	0.00	0.00

Average for all variables

2.61

Notes: Variables from the Sala-i-Martin, Doppelhofer, and Miller (2004) dataset, combined with income data from Penn World Table version 6.2 and World Development Indicators.